

# Trainees Meeting 2025

15 - 16 May

Horizon Leeds & Online (Hybrid meeting)

## Five top tips for getting the most out of your meeting:

### 1. Record your attendance

**In person:** Attendance should be recorded by scanning in at the registration desk using the QR code on your joining email or providing your name. Each day you attend you will need to scan in.

**Online:** You will receive a CPD certificate for the days you have watch online. **Viewing the content post-event will be certified, and certificates are issued 3 days after your last viewing.**

### 2. Give feedback

Please take the time to fill out the feedback form after each day. It is mandatory for CPD and to generate a CPD certificate. It also helps us improve our conference and provides invaluable information to our speakers about their presentation.

### 3. Visit our sponsors

Please review the symposia in this programme and consider watching. Challenge yourself to spend 5 minutes during the next 2 days to speak to a sponsor.

### 4. Join the discussion

All delegates are encouraged to ask questions for the speakers and panel discussions. If you are thinking it, someone else is too, so please use the 'Ask' function on the online platform or the microphone in the room. If you're tweeting, tag us at **@GeriSoc** and use the hashtag **#BGSconf**.

### 5. Get social

Chat with attendees, join a socialising event or interact in a group discussion.

## With grateful thanks to our sponsors:

Our sponsors have provided a sponsorship grant towards this independent programme. They have had no editorial input into or control over the agenda, content development or choice of speakers, nor opportunity to influence, except for the sponsored symposia presentations. They have not had any input or influence as to the content of the programme. Sponsored symposia and Spotlight on sessions are not eligible for external CPD and are intended for a healthcare professional audience in the UK.

We are excited to welcome delegates back to in-person conferences and we can't wait to share the delights of Leeds with you. We hope this Trainees Meeting will offer you the opportunity to refresh, relax and refocus. Please take time during the conference to reflect, meet a new colleague or catch up with an old friend.

We have organised a number of social activities throughout the conference which we encourage you to take part in, as well as explore the delights that Leeds has to offer. Please see the below timetable to help plan your time.

## SOCIAL PROGRAMME \* This social programme is self funded, independent from our sponsor's support.

### Thursday

15 May

#### 13.00 - 14.00 Lunch meetups

Join colleagues after the sessions. We will have meet up points for specific interests.

#### 19.00 Social Dinner

Join colleagues after the sessions for drinks and food. White Cloth Hall Market  
Attendees will pay for their own food and drinks  
- We will supply the friendly atmosphere and conversation.

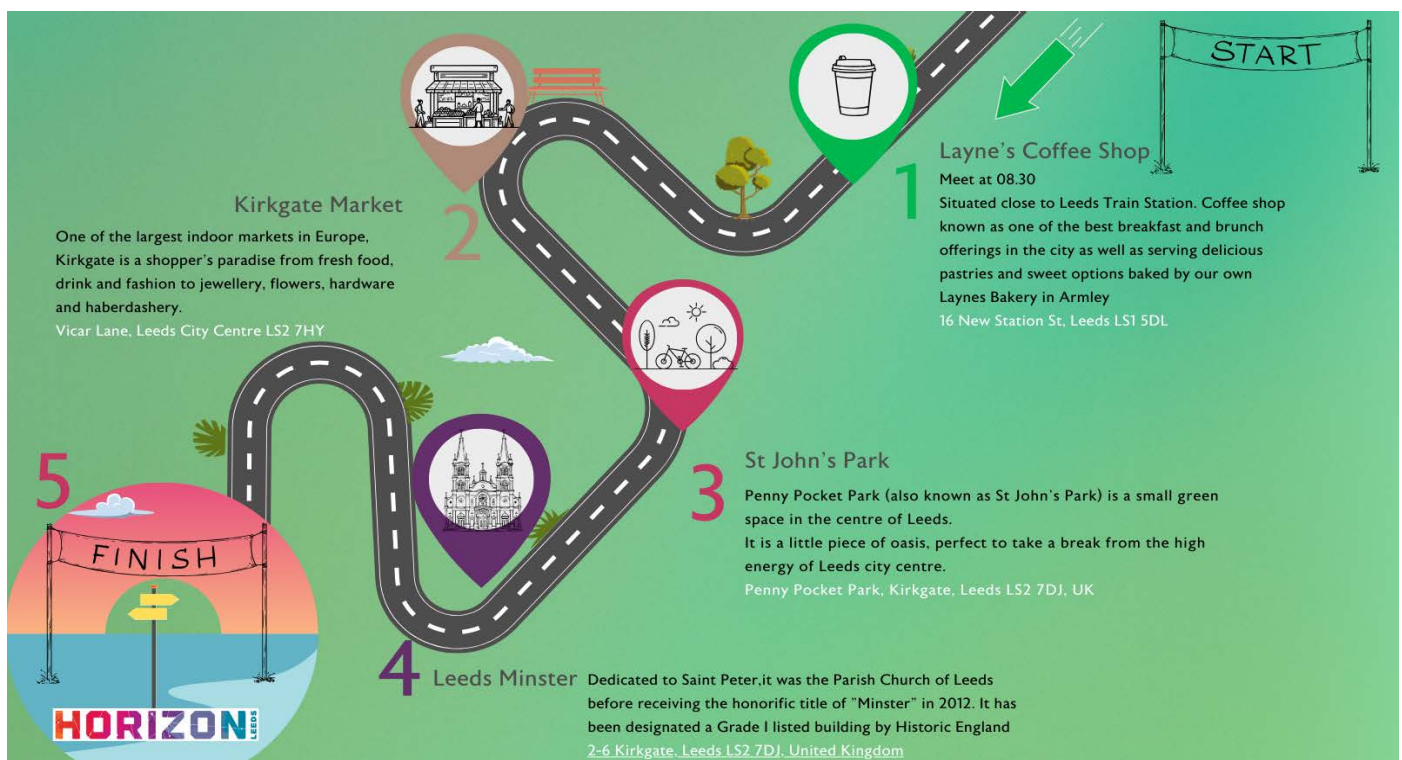
### Friday

16 May

#### 08.30 Early Morning - Coffee Crawl

#### 13.00 - 14.00 Lunch meetups

Join colleagues after the sessions. We will have meet up points for specific interests.





# NAVIGATING COMPLAINTS

## AN INTERACTIVE WORKSHOP

### Feeling uncertain about handling complaints? You're not alone.

Join us for an interactive and safe space to explore the complaints process and gain confidence in responding effectively.






#### WORKSHOP AIMS:

- Help trainees feel more confident in the complaints process and their role as SpRs/Consultants.
- Encourage open discussions about concerns and challenges.
- Provide practical experience in responding to complaints.

This session is designed to be highly interactive, with opportunities for discussion and reflection.

#### WHAT YOU'LL LEARN:

-  **Understanding the Process:**  
What happens once a formal complaint is made?
-  **Roles & Support:**  
Who responds to the complaint and what support is available?
-  **Best Practices:**  
Principles of how to respond effectively and professionally.

**DATE:** Friday, 16th of May     **TIME:** 11.30am

**Join us to build confidence and skills in managing complaints!**



Those attending the meeting in person will notice some changes to our event delivery as part of our commitment to environmental sustainability.

- We are continuing with the use of **digital platforms** as a core part of our conference and meetings delivery and reducing material used at conferences through paperless conferences.
- The meeting recordings will be **accessible online** for you to watch on demand for 12 months, for all those attending in person.
- We encourage you to **walk, cycle or travel by public transport** to the conference venue where possible.
- Try and remember to bring a **reusable water bottle** with you to the venue. Water will be available from water coolers throughout the venue as well as some packaged water. Please recycle packaging by disposing of it at the correct recycling point.
- We are offering a greater choice of **sustainable, meat-free options** as part of our catering for the event.
- This is a **paperless** meeting and we are not printing hard copies of the programme. Please consult the programme online ([www.bgs.org.uk/25Trainees](http://www.bgs.org.uk/25Trainees)) for session details and timings. This is accessible online via your devices before and during the conference. Large poster programmes will be displayed on boards around the venue for reference.
- CPD certificates will be emailed rather than printed. Remember to scan in each day you are attending at registration, or use the **'Sign in for CPD today'** button on the online platform.
- We will be displaying **paperless posters** in place of traditional physical posters at the meeting. Please look at the poster platform (<https://posters.bgs.org.uk>) in advance and use the onsite computers and screens at the venue to browse and comment.
- Bring your own pen and pad if you have them, however, the lanyards, pens and pads at our conference are all from recycled origins.



## Flexible attendance options: In person or online

There is no difference in registration fees for in person and online meeting attendance. The registration fee provides access to the conference or online platform for the days you are registered. On demand viewing post event will be limited to the days for which you have registered and paid.

There is a flexible transfer from in person to online attendance as clinical service and life balance require. Please check our [FAQs](#) first for any queries you may have about attendance or on demand watching.



**KEYNOTE: Thursday 15 May 09.30**

**Professor Andy Clegg**  
**Professor of Geriatric Medicine**

Andy is Professor of Geriatric Medicine at the University of Leeds, honorary consultant geriatrician at Bradford Royal Infirmary and Associate Director of Health Data Research UK North (HDRUK North). He leads a research theme focused on improving care for older people with frailty as part of the NIHR Applied Research Collaboration Yorkshire & Humber (NIHR ARC YH). Andy also leads a number of NIHR funded studies: a Programme Grant to optimise and evaluate personalised care planning for older people with frailty (PROSPER); the Home-based Extended Rehabilitation for Older People (HERO) trial, and the Community Ageing Research 75+ (CARE 75+) national cohort study.

Andy has considerable expertise in research using routine health data. He led the development, validation and national implementation of the award winning and NICE-recommended electronic frailty index (eFI), and is currently leading work to develop eFI2 as part of NIHR ARC YH. Andy is also leading the NIHR HTA-funded eFI+ project, building on the eFI to develop four integrated prognostic-decision models to better target interventions (community rehab, falls prevention, community CGA and advance care planning) for people with frailty.



In his role as Associate Director of HDRUK North, Andy is leading the development, validation and evaluation of an anticholinergic medication index using prognostic modelling methods.

**KEYNOTE: Friday 16 May 09.30**

**Dr Tom Downes**  
**National Clinical Director for Older People**

Tom completed medical training at Guy's Hospital and has been Consultant Geriatrician in Sheffield Teaching Hospitals since 2003. In 2009, Tom undertook a Health Foundation QI Fellowship at the Institute for Healthcare Improvement, Boston, USA and returning to Sheffield developed the role of Clinical Lead for Quality Improvement. He completed his MPH at Harvard University in 2011. In 2013, Tom was appointed Honorary Professor at Sheffield Hallam University. His main interest is the translation of improvement science to achieve transformative redesign of complex healthcare and high quality levels of performance.

Tom has facilitated the redesign of acute geriatric care in Sheffield using methodology translated from Toyota. The geriatric medicine team have designed and launched a seven day multidisciplinary Frailty Assessment Unit achieving significant reductions in length of stay and mortality. Subsequently, Tom coached the transformative redesign of discharge of frail older patients with the 'Discharge to Assess' innovation delivering an improved patient experience while reducing hospitalization by thousands of bed days.

Tom is now National Clinical Director for Older People at NHS England. Twitter: @sheffielddoc





Accommodation in recent years has increased in costs and this year keeping costs low is important.

To secure the best accommodation within your budget we recommend you book as early as possible,

[Click here for accommodation at reduced rates](#)

[Useful information about Leeds](#)

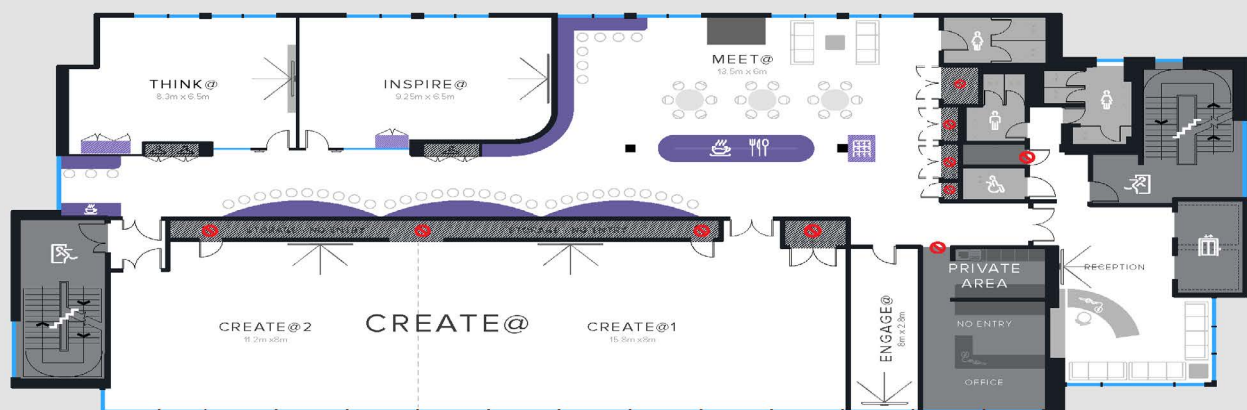
Other sites and booking directly with the hotels may be cheaper - please do shop around.  
BGS members can also access preferential rates at the Hilton chain using the details below.

## HILTON

- Log on to [www.hilton.com](http://www.hilton.com)
- Put in the location and dates
- Click on advanced search
- Click on 'Add a special rate code'
- In the corporate account box, type in **113011292**

## Venue Floorplan

**HORIZON**  
LEADS  
LEADING-EDGE, CONFERENCE, LEARNING AND MEETING SPACE



Use the table below to help plan how you will spend your first day at the conference. More detailed information about the sessions in each stream can be found on the following pages.

Overview			
8.30	Registration		
9.45	Opening Address		
10.00	Guest Lecture - Geriatric medicine in the new world Create 1&2		KEYNOTE
10.45	Subspecialty talks Create 1&2	GM CIP 1	GM CIP 2
11.30	Free time		
12.00	SCE Preparatory Session Create 1&2 GENERIC CIP 1	New Consultant Panel Inspire GENERIC CIP 1	#ChooseGeriatrics Think
13.00	Lunch and posters		
13.00	<b>Group Meetups</b> Join colleagues over lunch to catch up Look out for the signs indicating where to meetup.		
13.00	<b>Group Meetups</b> Join colleagues over lunch to catch up Look out for the signs indicating where to meetup.		
14.00	Workshops Create 1&2 BPPV Dix-Hallpike test and the Epley maneuver GM CIP 2	Continence Inspire PV Examinations GM CIP 2	Tissue Viability Think GM CIP 2
15.30	Free time		GENERIC CIP 1
16.00	OOPE Create 1&2		
17.00	End of Day 1		
19.00	Social programme: Dinner and Drinks		

**Registration from 08.45****Opening address**

09.45 Opening words from BGS President, Professor Jugdeep Dhesi

**Innovation in Geriatric Medicine from Yorkshire**

Moderators: Joyce Lau and James Laraman

**10.00** **Create 1&2**  
**10.00 Implementing delirium assessment and prevention**  
 Dr Sean Ninan, Consultant Geriatrician, Leeds Hospitals NHS Teaching Trust

**10.20 Vascular services for those living with frailty**  
 Dr Rebecca Anthony, Consultant in Elderly Medicine with an interest in Perioperative Medicine, Leeds teaching Hospitals NHS Trust

**Guest Lecture**

Moderators: Julianna Raghu and Victoria O'Brien

**KEYNOTE**

**10.45** **Create 1&2**  
**10.45 Geriatric medicine in the new world**  
 Professor Andrew Clegg, Professor of Geriatric Medicine, Head of Academic Unit for Ageing & Stroke Research Theme Lead, NIHR Applied Research Collaboration Yorkshire & Humber Co-Director, Health Data Research UK North, University of Leeds & Bradford Teaching Hospitals NHS Foundation Trust

**11.30** **Poster viewing time**  
 Visit the sponsored stands and poster viewing time: Authors will be able to take questions and provide more detail to questions submitted via the [BGS website](#)

**Breakout sessions****Career Development**

<b>12.00 - 13.00</b>	<b>SCE preparatory session</b> Moderators: Dylan Fisher Barry and Sara Page Create 1&2  Dr Divya Tiwari, Consultant Geriatrician, Royal Bournemouth Hospital Foundation Trust, BGS Deputy Honorary Treasurer and SCE Board Chair and Dr Sandy Thomson, Consultant Geriatrician, Salford Royal Hospital, SCE Exam Question Writer Chair	<b>New consultant panel</b> Moderators: Julianna Raghu and Victoria O'Brien Inspire  Dr Laura Hopkins, Consultant Geriatrician - Acute Frailty and GIM, St. Mary's Hospital, Imperial College Healthcare NHS Trust; Dr Abigail Flinders, Consultant in Elderly Medicine, Leeds Teaching Hospitals Trust and Dr Kate Guthrie, Consultant Geriatrician, Mid Yorkshire NHS Trust	<b>#ChooseGeriatrics</b> Moderators: Anirudh Kumar and Ennan Mwendwa Think  Dr Angela Nelves, StR Geriatric Medicine, University Hospital Wales and Dr Sarah True, Specialist Registrar in Geriatric Medicine, University Hospital Coventry
----------------------	--	---	---



13.00 - 14.00	<b>Lunch</b> Visit the sponsored stands and poster viewing time: Authors will be able to take questions and provide more detail to questions submitted via the <a href="#">BGS website</a>
13.00 - 14.00	<b>Group Meetups</b> Join colleagues over lunch to catch up. Look out for the signs indicating where to meetup.

## Carousel 25 min per station, participants rotate around

	<b>BPPV Dix-Hallpike test and the Epley manoeuvres</b> Facilitator: Boon Loo, Create 1&2  Dean Metz, ACPIVR Regional Coordinator, Falls & Vestibular Specialist Physiotherapist, South Tyneside and Sunderland NHS Foundation Trust  Dr Boon Loo, Consultant Physician and Geriatrician, Sheffield Teaching Hospitals NHS Trust	<b>Continence Devices and Examinations</b> Facilitator: Victoria Suter-Jones Inspire Not streamed	<b>Tissue Viability - Pressure Ulcers and Skin Tears</b> Facilitator: Dylan Fisher Barry Think Not streamed
14.00 - 15.30		Dr Victoria Suter-Jones, Consultant Geriatrician, University Hospital of Wales Co-chair CAV Antimicrobial Management Group Honorary Lecturer Cardiff University and Mr Sami Shawer, Consultant Urogynaecologist Dr Mosab Mahadi, and Dr Sharifah Naseem, Senior Gynaecology Trainees, South Tees Hospitals NHS Foundation Trust	Clare Greenwood and Donna Button, Tissue Viability Clinical Specialist Nurse, Leeds Teaching Hospitals NHS Trust
15.30	<b>Poster viewing time</b> Visit the sponsored stands and poster viewing time: Authors will be able to take questions and provide more detail to questions submitted via the <a href="#">BGS website</a>		

## Out of Programme

### Panel

	Moderators: Joyce Yau and James Laraman  <b>Community</b> Dr Julianna Raghu, ST7 Geriatric and General Internal Medicine, Guys and St Thomas' NHS Trust  <b>PhD</b> Dr Jonny Bunn, Geriatric Medicine Registrar, Northern Deanery  <b>FMLM</b> Dr Trisha Jeyabalasingham, Workforce Transformation and Service Improvement Fellow, North Middlesex University Hospital  <b>Stroke</b> Dr Nicola Vella, Geriatric Medicine Registrar, Thames Valley
16.00 - 17.00	
17.00	<b>End of Day 1</b>

Use the table below to help plan how you will spend your first day at the conference. More detailed information about the sessions in each stream can be found on the following pages.

Overview			
8.30	Social coffee and Walk. Meet at Layne’s Coffee		
09.30	<b>Guest Lecture - Neighbourhood health and the 3 shifts</b> Create 1&2 <div>GM CIP 5</div> <div>KEYNOTE</div>		
10.15	<b>Subspecialty talks</b> Create 1&2 <div>GM CIP 4</div> <div>GM CIP 6</div>		
11.00	Free time		
Workshops			
11.30	<b>Responding to complaints</b> Create 1&2 <div>GENERIC CIP 3</div>	<b>Service development Inspire</b> Developing a business plan to commission or develop a service <div>GM CIP 7</div> <div>Not streamed</div>	<b>Coroner’s Court Think</b> <div>GENERIC CIP 2</div>
13.00	Lunch and posters		
13.00	<b>Group Meetups</b> Join colleagues over lunch to catch up Look out for the signs indicating where to meetup.		
Masterclasses			
14.00	<b>Policy Masterclass</b> Create 1&2 <div>GENERIC CIP 1</div> <div>GM CIP 7</div>	<b>QIP Masterclass Inspire</b> <div>GENERIC CIP 4</div> <div>GM CIP 7</div>	
15.00	<b>Patient Safety, Risk and Governance</b> Create 1&2 <div>GENERIC CIP 4</div> <div>GM CIP 7</div>	<b>Research Journal Club Inspire</b> <div>GENERIC CIP 4</div> <div>GENERIC CIP 5</div>	

## Social Coffee and Walk

**08.00 - 09.15** Meet for coffee and a walk around around Leeds. Meet at Layne's Coffee

## Registration from 08.45

## Guest Lecture

**KEYNOTE**

**9.30 - 10.15** Moderators: Julianna Raghu and Victoria O'Brien  
Create 1&2  
09.30 **Neighbourhood health and the 3 shifts**  
Dr Tom Downes, Consultant Geriatrician, Sheffield Teaching Hospitals NHS Trust and National Clinical Director for Older People NHS England

**10.15 - 11.00** Moderators: Sara Page and Anirudh Kumar  
Create 1&2  
10.15 **Life after Stroke**  
Dr Shyam Kelavkar, Speciality Trainee Registrar Year 7 in Geriatric Medicine and General Internal Medicine, Cambridge University Hospitals NHS Foundation Trust  
  
10.35 **Rehabilitation of the older patient**  
Sam Olden, Consultant Physiotherapist (Rehabilitation and Frailty), CRG

**11.00** **Poster viewing time**  
Visit the sponsored stands and poster viewing time: Authors will be able to take questions and provide more detail to questions submitted via the [BGS website](#)

## Workshops

<b>11.30 - 13.00</b>	<p><b>Responding to complaints</b> Moderators: Sarah True and Angela Nelmes Create 1&amp;2</p> <p>The session should enable attendees to:</p> <ul style="list-style-type: none"> <li>Understand the process of what happens once a formal complaint has been made</li> <li>Learn who responds to the complaint and what support is available</li> <li>Cover the principles of how to respond to a complaint</li> </ul> <p>Dr Ipshita Scarrott, Clinical Lead, and Emma Oxtoby, QAL lead, Harrogate Hospital</p>	<p><b>Service development</b> Moderators: Sara Page and Anirudh Kumar Inspire</p> <p>The session will be an opportunity to work in groups, to develop a business case to the ICB for a new front door service. It's aimed to show how a business case is put together and who are the key ICB stakeholders.</p> <p>Dr Iain Wilkinson, VP Education BGS and Consultant Geriatrician, Surrey and Sussex Healthcare NHS Trust</p> <p>Dr Holly Middleditch, ST6 Registrar in Sexual Health and HIV Medicine, King's College London</p> <p>Dr Victoria O'Brien, Co-Chair Trainees' Council</p> <p><b>Not streamed</b></p>	<p><b>The Art of the Coroner</b> Moderators: Ennan Mwendwa and James Laraman Think</p> <p>This will cover notifying a death and the role of a coroner, how an investigation unfolds, interested persons and witnesses at an inquest and preventing future deaths.</p> <p>Andrew Harris, Assistant Coroner, South London, Professor of Coronial Law, William Harvey Research Institute, Queen Mary's University of London and Panel Member Ministerial Advisory Panel on deaths in Custody.</p> <p>Dr Ruth Law, Honorary Secretary, BGS and Consultant in care of older people and clinical lead, Whittington Health NHS Trust</p>
----------------------	---	--	---



13.00	<b>Lunch</b> Visit the sponsored stands and poster viewing time: Authors will be able to take questions and provide more detail to questions submitted via the <a href="#">BGS website</a>	
13.00	<b>Group Meetups</b> Join colleagues over lunch to catch up.  Look out for the signs indicating where to meetup.	
<b>Masterclasses</b>		
	<b>Policy Masterclass</b> Moderators: Megan Knight and Diana Newman Create 1&2	<b>QIP Masterclass</b> Moderators: Sarah True and Angela Nelmes Inspire
14.00 - 15.00	Dr Megan Knight, ST4 Geriatric Medicine, Whittington Hospital and Dr Diana Newman, ST4 Geriatric Medicine, Frimley Park Hospital  Dr Ruth Law, Honorary Secretary, BGS and Consultant in care of older people and clinical lead, Integrated Community Ageing Team (ICAT), Whittington Health NHS Trust  Lucy Aldridge, Policy Co-Ordinator BGS	Dr Tom Downes, Consultant Geriatrician, Sheffield Teaching Hospitals NHS Trust and National Clinical Director for Older People NHS England  Dr Sean Ninan, Consultant Geriatrician, Leeds Hospitals NHS Teaching Trust  Dr Tom Bartlett, Consultant Geriatrician, University Hospitals Dorset and VP Clinical Quality, BGS ( <i>remote</i> )
	<b>Patient Safety, Risk and Governance</b> Moderators: Julianna Raghu and Victoria O'Brien Create 1&2	<b>Research Journal Club</b> Moderators: Joyce Lau and James Laraman Inspire
15.00 - 16.00	Dr Georgina Meredith, Consultant Physician - General, Geriatric and Stroke Medicine, King's College London NHS Foundation Trust	Discussion of a paper on Haematology and Older People using the Critical Appraisal Skills Programme toolkit  Dr Oly Todd, Associate Professor, University of Leeds and Dr Eden Page, FY1, Bradford Royal Infirmary
16.00	<b>Conference Close</b>	

<b>GENERIC CIP #</b>	<b>Generic CIP</b> Generic Capabilities in Practice. 1. Able to successfully function within NHS organisational and management systems 2. Able to deal with ethical and legal issues related to clinical practice 3. Communicates effectively and is able to share decision making, while maintaining appropriate situational awareness, professional behaviour and professional judgement 4. Is focussed on patient safety and delivers effective quality improvement in patient care 5. Carrying out research and managing data appropriately 6. Acting as a clinical teacher and clinical supervisor
<b>GM CIP #</b>	<b>Geriatric Medicine CIP</b> Geriatric Medicine Specialty CIPs 1. Performing a comprehensive assessment of an older person, including mood and cognition, gait, nutrition and fitness for surgery in an in-patient, out-patient and community setting 2. Managing complex common presentations in older people, including falls, delirium, dementia, movement disorders, incontinence, immobility, tissue viability, and stroke in an in-patient, out-patient and community setting 3. Managing older people living with frailty in a hyper-acute (front door), in-patient, out-patient and community setting 4. Managing and leading rehabilitation services for older people, including stroke 5. Managing community liaison and practice 6. Managing liaison with other specialties, such as surgery, orthopaedics, critical care, oncology and old age psychiatry 7. Evaluating performance and developing and leading services with special reference to older people
<b>Innovations in geriatric medicine in Yorkshire</b> • <b>Implementing delirium assessment and prevention</b> • <b>Vascular services for those living with frailty</b>	Geriatric medicine CIP 1: Comprehensive assessment of the older person • Performs an assessment of cognition (including acute, chronic and rapidly deteriorating) and mental capacity • Geriatric medicine CIP 2: Managing complex presentations • “Recognises, diagnoses and manages a state of delirium presenting both acutely or sub-acutely and identifies those who require follow up” • Assesses and manages common types of leg and pressure ulceration, surgical and other wounds in older patients • Geriatric medicine CIP 3: Frailty • Recognises the impact of frailty on the management and prognosis of patients living with chronic conditions
	<b>Breakout sessions : Career development</b>
<b>New Consultant panel</b>	Generic CIP 1: Functions successfully within the NHS • Demonstrates engagement in career planning
<b>SCE Preparation</b>	Generic CIP 1: Functions successfully within the NHS • Keeps practice up to date through learning and teaching
	<b>Carousel</b>
<b>Dix-Hallpike / Epley manoeuvre</b>	Geriatric medicine CIP 2 : Managing complex presentations • Assesses and manages older patients presenting with falls
<b>Continence</b>	Geriatric medicine CIP 2 : Managing complex presentations • Assesses and manages older people with urinary and faecal incontinence
<b>Tissue viability</b>	Geriatric medicine CIP 2: Managing complex presentations • Assesses and manages common types of leg and pressure ulceration, surgical and other wounds in older patients
	<b>Panel</b>
<b>Out of programme</b>	Generic CIP 1 : Functions successfully within the NHS • “Keeps practices up to date through learning and teaching” • Demonstrates engagement in career planning

<b>Guest lecture Neighbourhood health and the 3 shifts</b>	<ul style="list-style-type: none"> <li>Geriatric medicine CIP 5: Community practice</li> <li>-Understands the various agencies involved in community care, (including voluntary, social prescribing and third sector)</li> </ul>
<b>Life after stroke</b> <b>Rehabilitation of the older patient</b>	<ul style="list-style-type: none"> <li>Geriatric medicine CIP 4 : Rehabilitation and stroke</li> <li>Applies the principles of specialist rehabilitation services (including orthogeriatric and stroke)</li> <li>Appropriately assesses patients for rehabilitation in medical, orthopaedic and surgical wards, and identifies those suitable for community rehabilitation</li> <li>Geriatric medicine CIP 6 : Liaison with other specialties</li> <li>Demonstrates the ability to assess patients for rehabilitation in medical, orthopaedic and surgical wards</li> </ul>
	<b>Workshops</b>
<b>Service development</b>	<p>Geriatric medicine CIP 7: Service evaluation, development and leadership</p> <ul style="list-style-type: none"> <li>Contributes to, and delivers, quality improvement with a particular focus on services for older people and those living with frailty. Demonstrates a positive attitude to improvement and change</li> <li>Understands management of services, including performance measures, and principles of commissioning where appropriate</li> </ul>
<b>Responding to complaints</b>	<p>Generic CIP 3: Patient safety</p> <ul style="list-style-type: none"> <li>Raises and escalates concerns where there is an issue with patient safety or quality of care</li> <li>Demonstrates commitment to learning from patient safety investigations and complaints</li> </ul>
<b>Coroners court</b>	<p>Generic CIP 2: Ethical and legal issues</p> <ul style="list-style-type: none"> <li>Aware of national legislation and legal responsibilities, including safeguarding vulnerable groups</li> <li>Behaves in accordance with ethical and legal requirements</li> </ul>
	<b>Masterclasses</b>
<b>Policy</b>	<p>Geriatric medicine CIP 7 : Service evaluation, development and leadership</p> <ul style="list-style-type: none"> <li>Understands management of services, including performance measures, and principles of commissioning where appropriate</li> <li>Understands local, national and UK health priorities and how they impact on services for older people living with frailty</li> </ul> <p>Generic CIP 1 : Functions successfully within the NHS</p> <ul style="list-style-type: none"> <li>Aware of the role of, and processes for, operational structures within the NHS</li> </ul>
<b>Quality improvement</b>	<p>Geriatric medicine CIP 7 : Service evaluation, development and leadership</p> <ul style="list-style-type: none"> <li>Contributes to, and delivers, quality improvement with a particular focus on services for older people and those living with frailty. Demonstrates a positive attitude to improvement and change</li> </ul> <p>Generic CIP 4 : Safety and quality</p> <ul style="list-style-type: none"> <li>Contributes to and delivers quality improvement</li> </ul>
<b>Patient safety, risk and governance</b>	<ul style="list-style-type: none"> <li>Geriatric medicine CIP 7 : Service evaluation, development and leadership</li> <li>-Demonstrates commitment to learning from patient safety investigations and complaints, shares good practice appropriately and develops services accordingly</li> </ul> <p>Generic CIP 4 : Safety and quality</p> <ul style="list-style-type: none"> <li>Makes patient safety a priority in clinical practice</li> </ul>
<b>Journal club</b>	<p>Geriatric medicine CIP 7 : Service evaluation, development and leadership</p> <ul style="list-style-type: none"> <li>Demonstrates appropriate knowledge of research principles and concepts and the translation of research into practice</li> <li>Demonstrates ability to carry out critical appraisal of the literature and understands the role of evidence in clinical practice and its limitations in an older population under-represented in clinical trials</li> </ul> <p>Generic CIP 5 : Research</p> <ul style="list-style-type: none"> <li>Demonstrates ability to carry out critical appraisal of the literature</li> </ul>







**British Geriatrics Society**  
Improving healthcare  
for older people

Marjory Warren House  
31 St John's Square  
London EC1M 4DN

Telephone +44 (0)20 7608 1369  
Email [registrations@bgs.org.uk](mailto:registrations@bgs.org.uk)  
Website [www.bgs.org.uk](http://www.bgs.org.uk)