



British Geriatrics Society
Improving healthcare for older people

Dementia, Delirium and Brain Health in Older People 2026

20 May

IET Auston Court, Birmingham & Online
(Hybrid meeting)

Five top tips for getting the most out of your meeting:

1. Record your attendance

In person: Attendance should be recorded by scanning in at the registration desk using the QR code on your joining email or providing your name. Each day you attend you will need to scan in.

Online: You will receive a CPD certificate for the days you have watched online. **Viewing the content post-event will be certified, and certificates are issued 3 days after your last viewing.**

2. Give feedback

Please take the time to fill out the feedback form after each day. It is mandatory for us to generate and issue a CPD certificate but also helps us improve our conference and provides invaluable information to our speakers about their presentation.

3. Visit our sponsors

Please review the symposia in this programme and consider watching. Challenge yourself to spend 5 minutes during the conference to speak to a sponsor.

4. Join the discussion

All delegates are encouraged to ask questions for the speakers and panel discussions. If you are thinking it, someone else is too, so please use the 'Ask' function on the online platform or the microphone in the room. If you're posting on X (formerly Twitter), tag us at **@GeriSoc** and use the hashtag **#BGSconf**. You can also tag us on Facebook and LinkedIn

5. Get social

Chat with attendees, join a socialising event or interact in a group discussion.

With grateful thanks to our sponsors Nutrinovo and NIHR

Our sponsors have provided a sponsorship grant towards this independent programme. They have had no editorial input into or control over the agenda, content development or choice of speakers, nor opportunity to influence. They have not had any input or influence as to the content of the programme.

The 2026 Dementia, Delirium and Brain Health in Older People conference invites you to submit your research for presentation as platforms or poster presentations. This unmissable event expects to attract a broad multidisciplinary audience of participants providing a fantastic platform to showcase your work in a rapidly-evolving field.

The programme will address key issues in such as Chronic subdural haematoma, spinal trauma, and the future of major trauma in older people.

1. Prepare your submission

Abstracts will be accepted as platforms, for oral presentation, or posters for presentation on the BGS website and during breaks in the sessions during the day.

The submission must be made online

2. Submit online

The submitter should ideally be the lead author and presenter of the work.

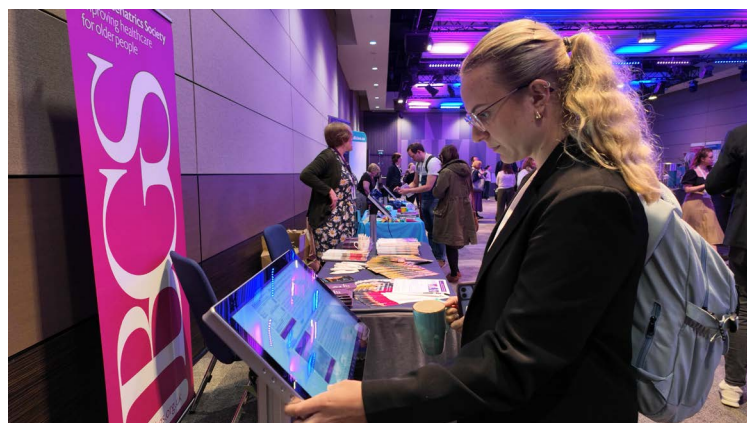
Submit by the deadline which closes 5pm GMT 16 February. Visit <https://www.bgs.org.uk/abstracts> to submit

The word count for abstracts is 370 words and abstracts need to be laid out under specific headings. These headings differ, depending on whether your study is categorised as scientific research or clinical quality

[Please also do review our language guide here.](#)

3. Results will be communicated in early March 2026

All accepted abstract presenters will need to register and pay the fees for the conference to present.



PROGRAMME

overview and information

	Programme
8.30	Registration and poster viewing Meet the authors of the presented posters and ask them about their work
9.15	Welcome
9.30 - 11.00	Brain Health & prevention Delirium
11.00	Free time
11.30 - 13.00	Identifying & diagnosing dementia Diagnosis in dementia and delirium
13.00	Lunch and posters Join colleagues over lunch to catch up Look out for the signs indicating where to meetup
14.00 - 15.30	Meeting the 10 Health Plan Challenge Future of Dementia care, digital health and community
15.30	Free time
16.00 - 16.45	End of life care Case studies: dying well for those living with dementia

Registration and Poster viewing**08.30** Registration and poster viewing**08.30** Poster viewing - Presenters of posters will be available to discuss their work**Brain Health & prevention****Delirium**

Moderators: Tom Welsh and Rachel Cowan

9.30 - 11.00	<p>09.30 Longitudinal study on brain network disorganisation in delirium. Dr Paddy Hogan, Specialist Registrar Geriatric Medicine, Central and North West London NHS Foundation Trust and Ophelia Dunne, Dementia Research Manager, UCL</p> <p>10.15 Delirium and sleep Cathy Brewin, Occupational therapist, Nottingham</p>
11.00	<p>Poster viewing time and coffee break Visit the sponsored stands and view our submitted posters:</p>

Identifying & diagnosing dementia**Diagnosis in dementia and delirium**

Moderators: Rachel Thomas

11.30 - 13.00	<p>11.30 Delivering Dementia Diagnosis: A blueprint for the future Speaker tbc</p> <p>12.00 Unrecognised delirium, undiagnosed dementia: how should we be managing cognitive spectrum disorders in the acute hospital? Professor Emma Reynish, Consultant Geriatrician, Professor of Dementia, Royal Infirmary, Edinburgh / University of Stirling Dr Callum Cruickshank, Specialty Doctor in Older Adult's Psychiatry, Royal Edinburgh Hospital and Speciality Doctor, MoE Liaison to Neurosurgery, Royal Infirmary of Edinburgh Alison Field, Admiral Nurse, Royal Lancaster Infirmary</p>
----------------------	--

Delirium

New elearning course out now



Free for BGS members
£150 for non members
10 CPD credits

The Future of Dementia Care in Older People

Meeting the 10 year plan challenge

KEYNOTE**13.45 -
15.30****13.45 The Future of Dementia Care**

Dr Jeremy Isaacs, Consultant Neurologist, St George's Hospital and Kingston Hospital and National Clinical Director for Dementia & Older People's Mental Health, NHS England

14.30 Assessing cognitive ability in the community with digital tools

Speaker tbc

15.00 Onward dementia care in community settings

Professor Sarah Pendlebury, Professor of Medicine and Old Age Neuroscience, University of Oxford and Consultant Physician and OUH Clinical Lead for Dementia/Delirium, Oxford University Hospitals NHS Foundation Trust

15.30**Poster viewing time and coffee break****End of life care**

Dying well for those living with Dementia

**16.00 -
17.00****15.45 Case studies****Panel Discussion**

Professor Liz Sampson, Professor of Liaison Psychiatry Academic Centre for Healthy Ageing, across Centre for Psychiatry and Mental health, Wolfson Institute of Population Health, Barts Health NHS Trust and Whipps Cross Hospital.

Dr Amy McWhirter. Trust Grade Registrar, UCLH

16.45 Closing Remarks

Dr Jeremy Issacs

National Clinical Director for
Dementia & Older People's Mental Health,
NHS England

The Future of Dementia Care

Dr Isaacs is a consultant neurologist at St George's and Kingston Hospitals. He has a specialist interest in cognitive neurology and dementia and is National Clinical Director for Dementia and Older People's Mental Health at NHS England.

He is clinical lead for the multi-disciplinary Cognitive Neurology service at St George's Hospital which provides diagnosis, treatment and support for all types of cognitive disorder, including young-onset and atypical dementias, and a support group for people living with Young Onset Dementia. Dr Isaacs studied medicine at Cambridge and UCL and held postgraduate research posts at KCL Institute of Psychiatry, Psychology & Neuroscience and UCL Institute of Neurology. His PhD was on the immunology of Creutzfeldt-Jakob disease (CJD).

Dr Isaacs was a member of the NICE 2018 dementia guideline committee and chaired the NICE self-harm guideline committee. From 2019-2024 he was Clinical Director of the NHS London Dementia Clinical Network, where he established the London Memory Service Network, produced guidance on memory service pathway (PDF) redesign, joint working (PDF) and multidisciplinary (PDF) meetings and designed and led the first London (PDF) and national memory service audits (PDF). He served on the Association of British Neurologists Cognitive Neurology Advisory Group and the Royal College of Psychiatrists Young Onset Dementia Services Working Group (PDF) and as a Director of the British Neuropsychiatry Association.

Dr Isaacs is Honorary Reader in Neurology at City St George's, University of London where he is Director of the Neurosciences Clinical Academic Group. He developed and co-directs the City St George's MSc in Clinical Neuroscience Practice. He has research interests in Alzheimer's disease, vascular dementia and functional cognitive disorders. He is a co-investigator on grants from Alzheimer's Research UK, Alzheimer's Society, and British Heart Foundation totalling > £1 million.

Onward care in community settings

Professor Sarah Pendlebury

Professor of Medicine and
Old Age Neuroscience, University of Oxford
Consultant Physician and OUH Clinical Lead for Dementia/Delirium,
Oxford University Hospitals NHS Foundation Trust

Sarah Pendlebury is a physician at Oxford University Hospitals NHS Foundation Trust (OUHFT) and was made Professor of Medicine and Old Age Neuroscience at the University of Oxford in 2020 having been Associate Professor since 2013. She works 50/50 in clinical and research work.

Sarah qualified in medicine from the University of Oxford in 1992 having studied pre-clinical medicine at Cambridge, and completed a DPhil at Oxford in clinical neuroscience in 2000. She was appointed Consultant Physician in 2008.

She is a member of the Editorial boards of Stroke, International Journal of Stroke, Neurology, and Cerebrovascular Diseases, is lead author on several books on TIA/stroke, neurology and old age medicine and senior editor of a case-based learning series (OUP) covering medical/surgical specialities.

Sarah has established clinical cohorts with detailed clinical characterisation, brain imaging and blood biomarkers to facilitate research on delirium, dementia and frailty with potential for translational impact.

Professor Liz Sampson

Case Studies - Dying well or the older patient living with dementia

Professor of Liaison Psychiatry Academic Centre for Healthy Ageing, across Centre for Psychiatry and Mental health, Wolfson Institute of Population Health, Barts Health NHS Trust and Whipps Cross Hospital.

Professor Sampson is the inaugural Professor of Liaison Psychiatry at the Academic Centre for Healthy Ageing, based between the Centre for Psychiatry and Mental health, Wolfson Institute of Population Health, Barts Health NHS Trust and Whipps Cross Hospital. She qualified at Birmingham University Medical School and then worked in the Midlands and Sydney before completing general adult and old age clinical psychiatry training at St Mary's, Queen's Square and UCL. She works clinically with the liaison psychiatry team at the Royal London Hospital.

Her research and clinical work focusses on the interface between physical and mental health, particularly around cognitive disorders such as delirium and dementia and the interface between acute hospital, emergency and community care. She has led major UK NIHR/ESRC research programmes on epidemiology and symptom management (i.e. pain, swallowing, agitation) in people with delirium and dementia, using mixed methods (large data, clinical cohorts, trials, meta-analysis implementation and policy).

Her research focuses on key clinical issues for frail older people. Her main areas of interest are:

- Dementia and delirium in acute hospital patients: Epidemiology and health services research
- Identifying, better understanding and managing common symptoms, including pain, delirium and difficulty swallowing.
- Liaison psychiatry for older hospital inpatients

Upcoming BGS events

See more at
bgs.org.uk/events



BritMODIS

Movement Disorders in Older People

27 March 2026

Wellcome Collection,
London & Online

HYBRID - ATTEND IN PERSON OR ONLINE

www.bgs.org.uk/26MD



Major Trauma in Older People

19 May 2026

IET Austin Court,
Birmingham & Online

HYBRID - ATTEND IN PERSON OR ONLINE

www.bgs.org.uk/26MT

With thanks to our sponsors