

The Evolution of Nurse Education in Sub Saharan Africa (Parkinsons)

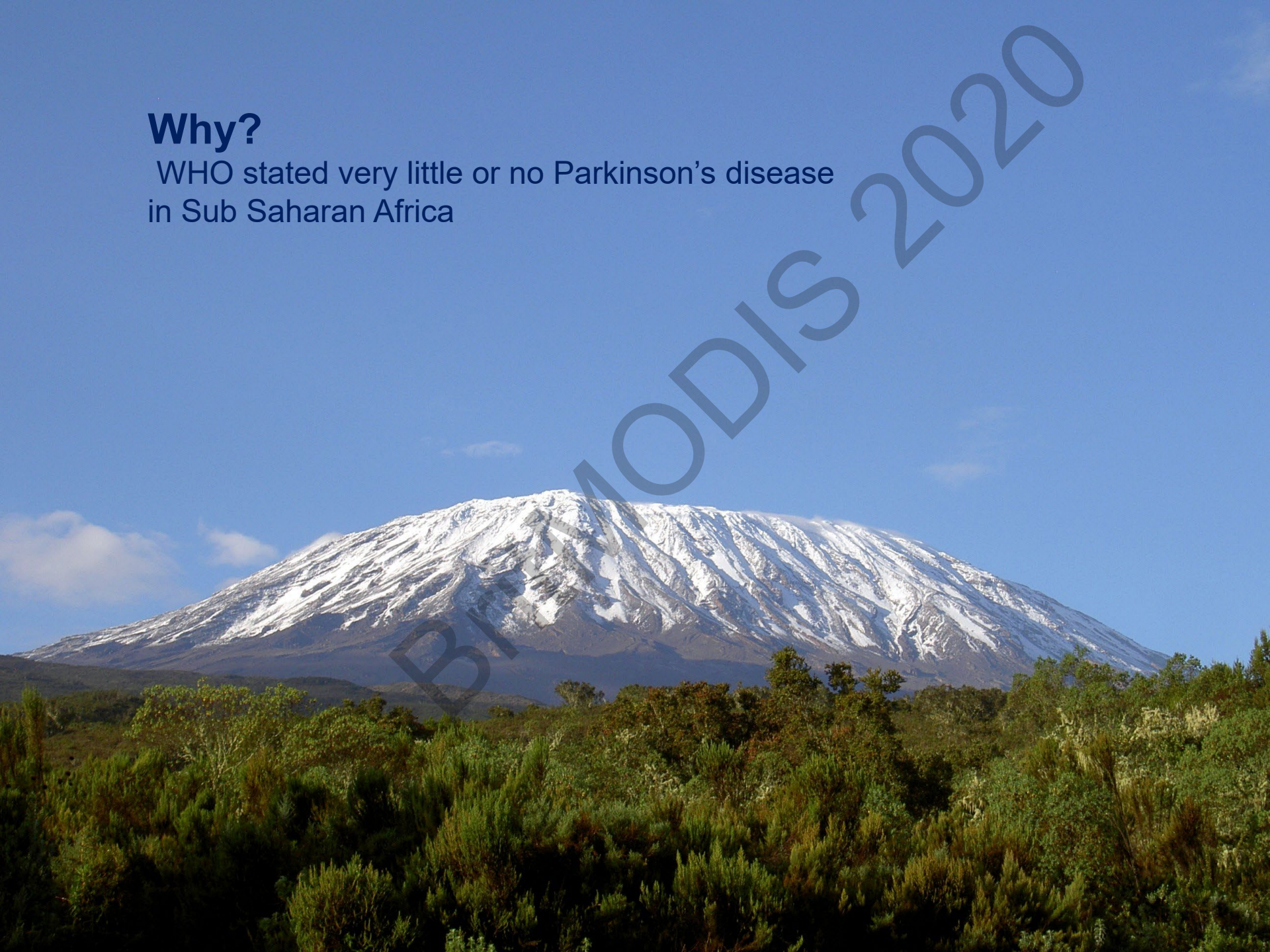
Louise Ebenezer
PDNS

Cwm Taf Morgannwg University Health Board



Why?

WHO stated very little or no Parkinson's disease
in Sub Saharan Africa



Background

- Hai PD Prevalance Study, Tanzania 2005/6
 - Surveillance site
- Screening questions
 - 5 questions
- MDS Task Force
 - Set up by Prof Richard Walker
 - Education for Neurologists/non neurologists
 - Drug supply/distribution
 - WHO essential drug list update
 - Led to nurse training
 - Based on PDNS course in Swansea University

Parkinson's Nurse Training

- Trained 2 PDNS from Tanzania
 - From Hai Prevalence Study (first in SSA)
 - Great potential in SSA due to shortage of doctors
- 2012 first course in East Africa (Tanzania)
- 2013 West Africa (Ghana) joint course for nurses and non-specialist doctors
 - Funded by the World Federation of Neurology (WFN) & MDS
- 2014 (Johannesburg) Funded by the SAFRA Foundation
- 2016 first stand alone country (Ethiopia)
- 2019 Nurses and AHP (Tanzania)



Tanzania

Ethiopia

Uganda

Rwanda

Kenya

Nigeria

Ghana

Gambia

Sierra Leone

Nigeria

Cameroon

Johannesburg

Zimbabwe

Malawi

Botswana

South African

Ethiopia

Tanzania

Madagascar

Egypt

Kenya

75 nurses plus

Ethiopia

1st Parkinson's Disease Nurse Course Tanzania 2012

Richard Walker, Louise Ebenezer, Catherine Dotchin,
Juzar Hooker, Lynda Hind



Ghana 2013 - 1st West Africa Course, joint with non-specialist doctors

Italy - Dr. Roberto Cilia, Dr Marianna Amboni, Nurse Alba Bonetti, Erica Cassani dietician

UK - Professor Richard Walker, Dr. Catherine Dotchin, PDNS Louise Ebenezer, Jean Martey

Ghana - Abert Akpalu and Austina Charway - Neurologists

Nigeria -Njideka Okubadejo - Neurologist



Johannesburg 2014

Louise Ebenezer, Jane Price
Richard Walker, Jonathan Carr (South Africa)



1st stand alone country

Faculty – Dr J Bower, Dr R Walker, Louise Ebenezer



PARKINSON DISEASE NURSE COURSE

January 11-12, 2016



International
Movement

The Challenges

- Understanding the complexities of Parkinson's disease
- Dispelling myths
 - Regarding Parkinson's
- Managing Parkinson's disease with limited or no resources
- Mixed groups (South Africa)
- The importance of the PDNS role
 - Managing chronic condition
 - Raising awareness of the condition
 - Supporting and educating patients, families and wider community
 - *Becoming autonomous practitioners*

Evaluation/lessons learnt

- Evaluated well
 - Free membership to MDS and PDNSA
- Set up an African nurse network
 - Still awaiting this to happen
- Allocated a UK mentor
 - Monthly contact with mentor
 - Irrelevant if seen patient or not
 - Not successful
- What's app group
 - Very successful
 - Set up patient groups
 - Educating others in various settings
 - Healthy competition between each other
- ES-MDS Nurse Summer School
 - Free places for 3-4 nurses from Africa
 - Nurses have attended each course

Tanzania 2019 – nurses and AHP's



Nurses, AHP's non-specialist doctors and faculty



Future

- Course in Kenya 2021
 - Funded by MDS
- Development of nurse network in Africa
 - African nurses to take lead
- Further interdisciplinary courses
 - Team approach

References

Dotchin CL, Msuya O, Kissima J, Massawe J, Mhina A, Moshi A, Aris E, Jusabani A, Whiting D, Masuki G, Walker RW. **The prevalence of Parkinson's disease in rural Tanzania.** Movement Disorders 2008 Vol 23 (11), 1567-1572

Poster: A Parkinson's disease nurse specialist course for East Africa: Richard Walker^{1, 2}, Louise Ebenezer³, Catherine

Dotchin^{1,2}, Lynda Hind⁴, Marycelina Msuya⁵, Megan Daniels⁶, Juzar Hooker⁷

A comparison of caregiver burden in older persons and persons with Parkinson's disease or dementia in sub-Saharan Africa

[Dr Catherine Dotchin](#), [Dr Stella-Maria Paddick](#), [Professor Richard Walker](#) (2014)

Autonomic function in a prevalent Tanzanian population with Parkinson's disease and its relationship to disease duration and 5-year mortality

[Dr Catherine Dotchin](#), [Professor Richard Walker](#) (2013)

Projected Numbers of People With Movement Disorders in the Years 2030 and 2050: Implications for Sub-Saharan Africa, Using Essential Tremor and Parkinson's Disease in Tanzania as an Example

[Dr Catherine Dotchin](#), [Professor Richard Walker](#) (2012)

The management of Parkinson's disease in sub-Saharan Africa

[Dr Catherine Dotchin](#), [Professor Richard Walker](#) (2012)

The challenge of Parkinson's disease management in Africa

[Dr Catherine Dotchin](#), [Professor Richard Walker](#) (2007)

Thank you

