

THE DEVELOPMENT OF AN ACUTE FRAILTY UNIT AT A LARGE REGIONAL CENTRE

A Yusoff; N Jones; A Bari; S Morgan; A Burgess; D J Burberry; E A Davies

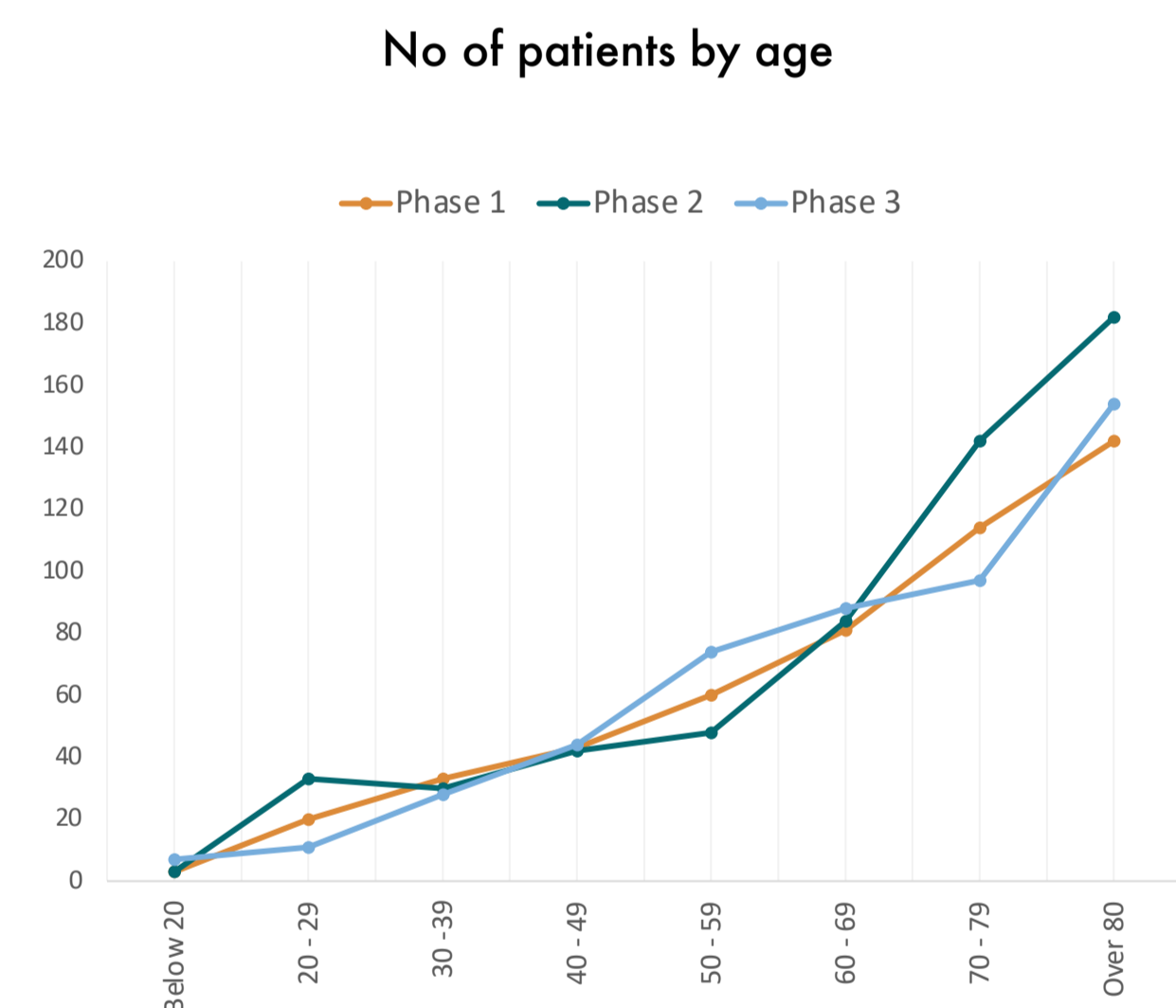
Rapid Assessment Unit; Morriston Hospital, Swansea Bay University Health Board (SBUHB)



INTRODUCTION

- An Acute Medical Unit at Morriston Hospital became geriatrician-led in July 2021.
- From January 2022 the unit received patients on frailty criteria for Comprehensive Geriatric Assessment (CGA).
- The unit runs twice daily multidisciplinary board rounds, has continuity of consultant presence and a team of clinical nurse specialists that actively manage patient pathways.

RESULTS



50.1%

Patients in Phase 3 did not meet the frailty criteria set for the unit



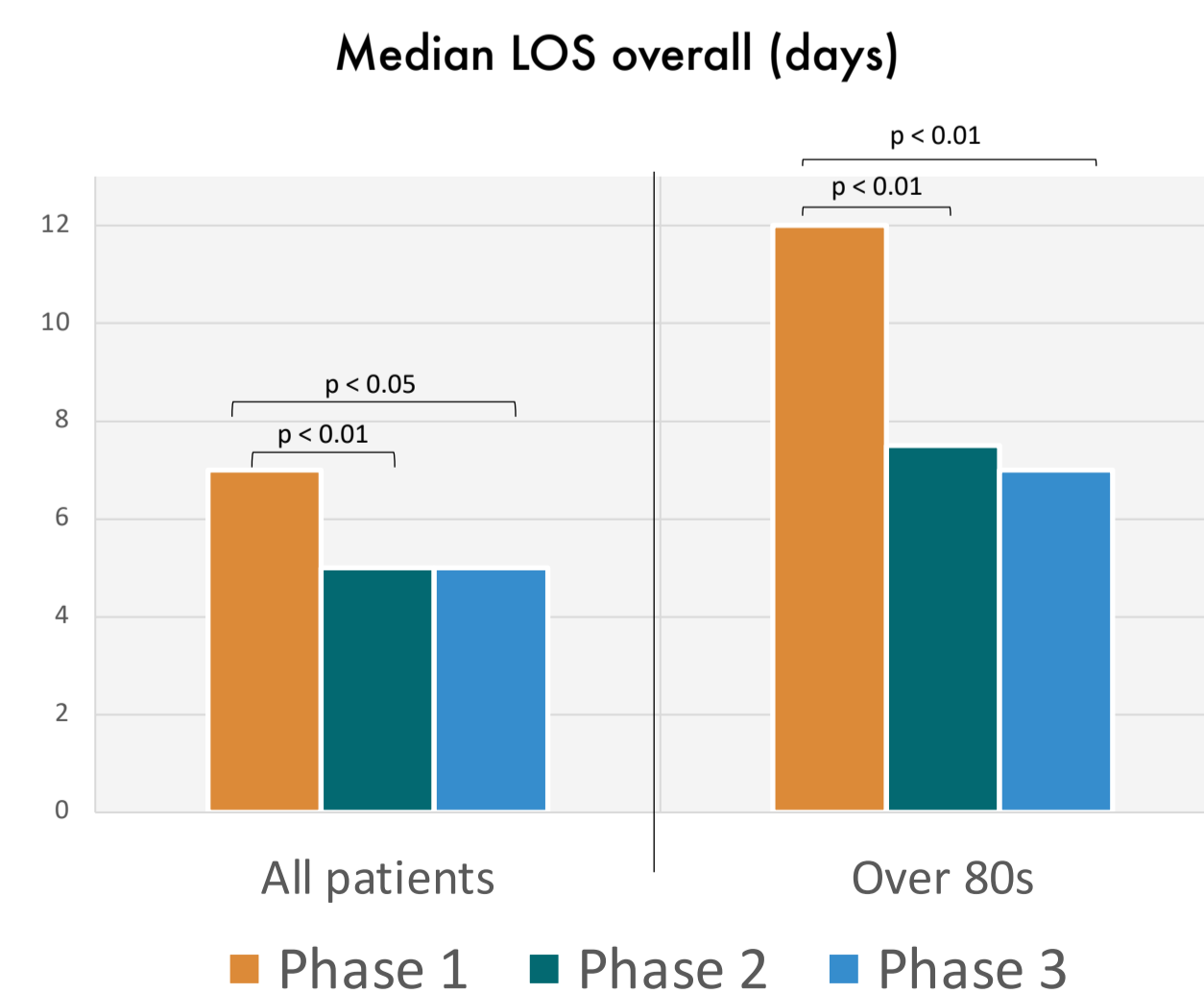
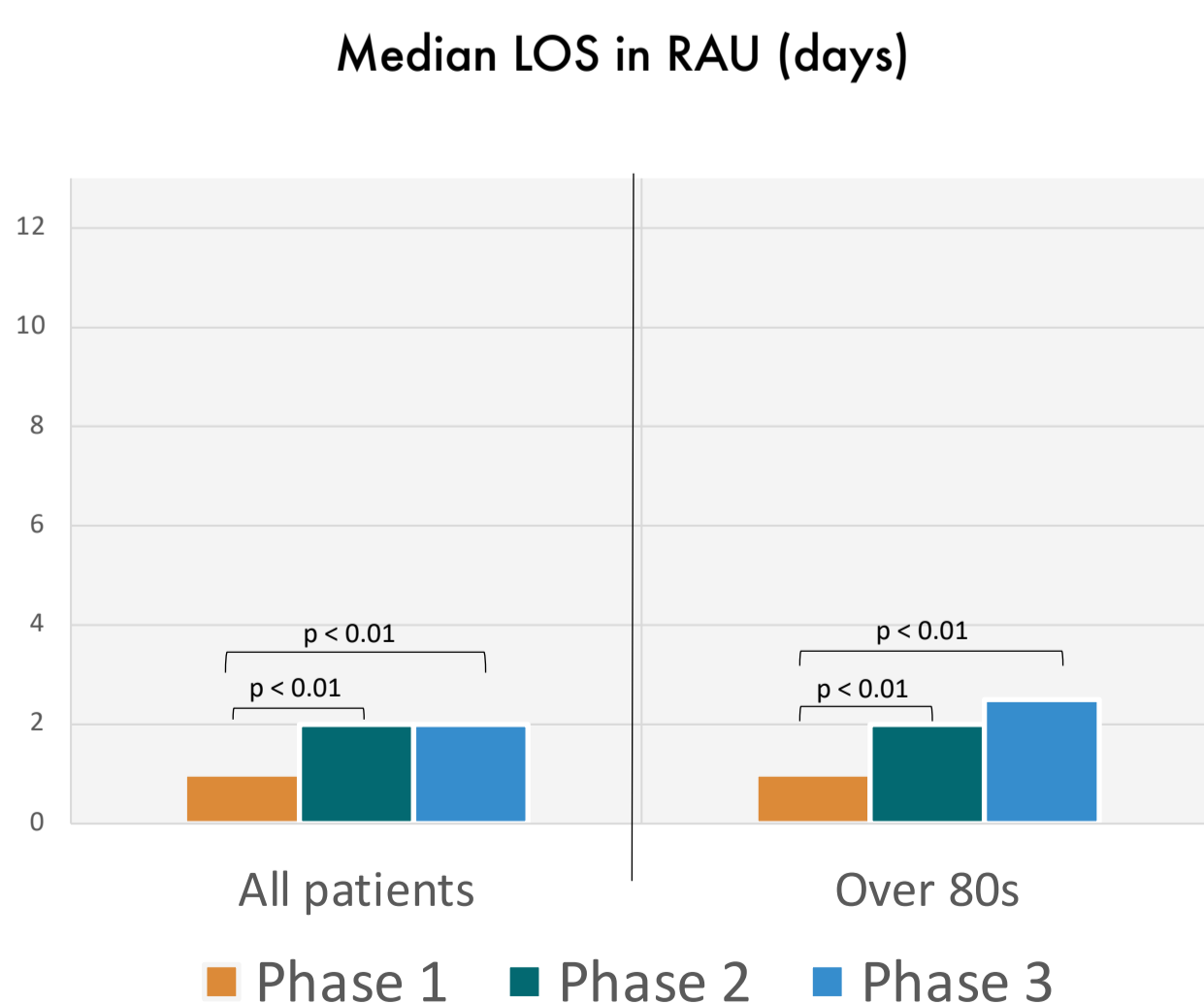
No of referrals to other specialities per bed (2022)

0.41

Geriatrician In RAU

0.57

Acute Care Physician



METHODOLOGY

PHASE 1

- Acute Physician-led Unit
- 496 patients between Nov '20 - Jan '21 analysed

PHASE 2

- Geriatrician-led Unit
- 566 patients between Sept - Nov '21 analysed

PHASE 3

- Frailty specific intake
- 503 patients between March - July '22 analysed

CONCLUSION

- The unit has shown a LOS benefit >70 years, those >80 years experience a 5-day overall LOS reduction.
- Identifying frail patients who may benefit from CGA is essential for individuals and overall system efficiency.
- However, patient selection is difficult to achieve with usual bed management processes.
- Morriston Hospital has developed a modified electronic screening tool based on the Hospital Frailty Risk Score (HFRS). This is embedded into the digital patient management system. It is hoped that this can be utilised to improve access to CGA for older patients.