

S Brook¹, R Barnard, Y Al-Haddawi, A Wiggam³ S Chaudhuri¹, M Murden¹, G Todorov⁴. Department of Medicine for the Elderly, West Middlesex Hospital, London TW7 6AF, ¹SpR ²F1 ³SHO ⁴Consultant

BACKGROUND

- Global estimates indicate that over half of individuals aged 85 and older are frail, costing the UK healthcare system approximately £5.8 billion annually
- Mean social care costs for people who are not frail are £321, compared with £2,895 for individuals with frailty.
- An acute frailty service can reduce admissions
- The workforce required for this service and the importance of liaising with community services is set out by the BGS

AIM

To collect baseline data on frailty admissions prior to introduction of an Acute Frailty Service

METHODS

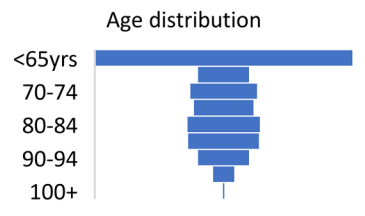
Data from patients aged ≥65 years admitted under medicine from 1st July – 14th July 2022 at West Middlesex Hospital were retrospectively collected:

- Age
- CFS score
- Length of stay(LoS)
- Number presenting with a frailty syndrome
- Prior admissions in last year
- 12-month mortality

Fig 1. Numbers

	N (%)
Total	459 Week 1 = 218 Week 2 = 241
No. ≥ 65 yrs	278 (60.8)

Fig 2. Age



RESULTS - Demographics

- There were 459 admissions; age range 18 - 102yrs
- 278 patients were ≥ 65yrs (Figs. 1, 2)
- Mean LoS = 11.0 days
- Length of stay increased with CFS score up to 7-8
- 151 of the 278 pts ≥ 65yrs admitted, had CFS 6 or above = 54.3%
- This equates to 32.9% of all the 459 admissions.

Frailty prevalence
54.3%

RESULTS - Frailty

- 21% of those ≥ 65yrs had known dementia/cognitive impairment
- 124 (44%) of these presented with a frailty syndrome
- 62 (22%) of these had a fall as one of more presenting issues

Fig 4. Numbers with a Frailty Syndrome

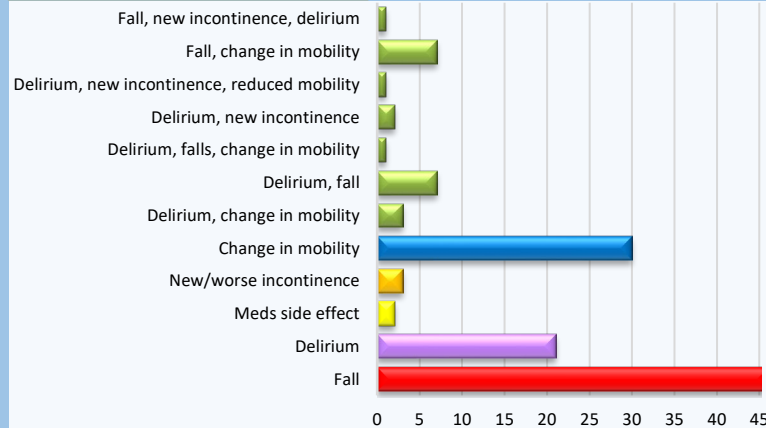


Fig 5. Length of stay for pts ≥ 65yrs

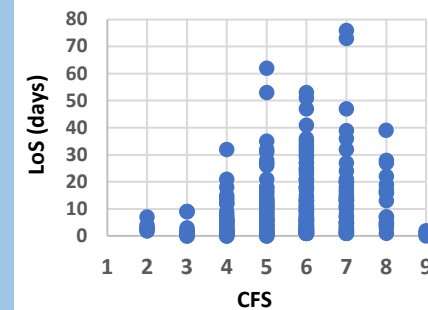


Fig 3. CFS scores of pts ≥ 65yrs

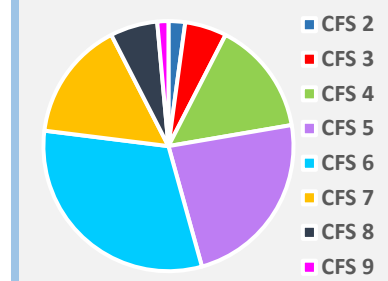


Fig 6. No. admission in prior year for the 151 patients with ≥CFS 6

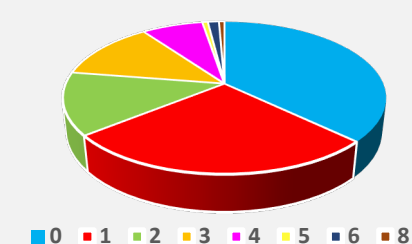
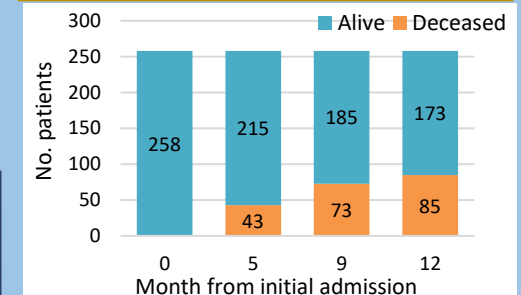


Fig 7. 12-month mortality for the patients ≥ 65 yrs
20 of the 278 patients died during the index admission



CONCLUSIONS

- A high % of medical admissions have frailty
- West Middlesex Hospital have introduced an AFS comprising a consultant, SHO, frailty practitioner & therapists
- A reduction of Long LOS and readmissions rate may be possible with the AFS
- The support of community services in Hounslow is key
- Re-audit will take place next year

NEXT STEPS

We continue to work closely with our community partners through our newly established 10-bed Hospital at Home – a joint initiative with the Hounslow Community Integrated Care Response Services