

Palliative Care Movement Disorders Multidisciplinary Meeting

R Davies¹, E Wilson², E Richfield², C Mundy³, B Wright³, E Stratton¹

¹University Hospitals Bristol and Weston NHS Trust ²North Bristol NHS Trust ³St Peter's Hospice, Bristol

Introduction

- Patients with Parkinson's disease have significant symptom burden in the advanced stages of their disease. (1,2)
- Integration of movement disorder and palliative care services has been limited by concerns about resource and sustainability.
- We present our experience of establishing a movement disorders palliative care multidisciplinary meeting.

Method and results

- Aims of the meeting were to facilitate holistic management of complex needs, support advance care planning (ACP) and consider referral to specialist palliative care services.
- 37 patients were discussed virtually over a 2 year period.
- Reasons for referral and outcomes are seen in figure [1].
- Patients from previous meetings were rediscussed to assess if they had a good response to intervention.
- 23 patients have died since the meeting. 70% died in their usual residence (home or care home), vs 59% according to national data for the same period. (3)
- The MDM has generated educational opportunities, joint assessments and professionals' framework for the palliative management of patients with a movement disorder.

December 2019- April 2022

37 new patients discussed
13 virtual meetings

Average time between discussion and death **139 days**

On average **3** new patients per meeting

FIGURE [2]

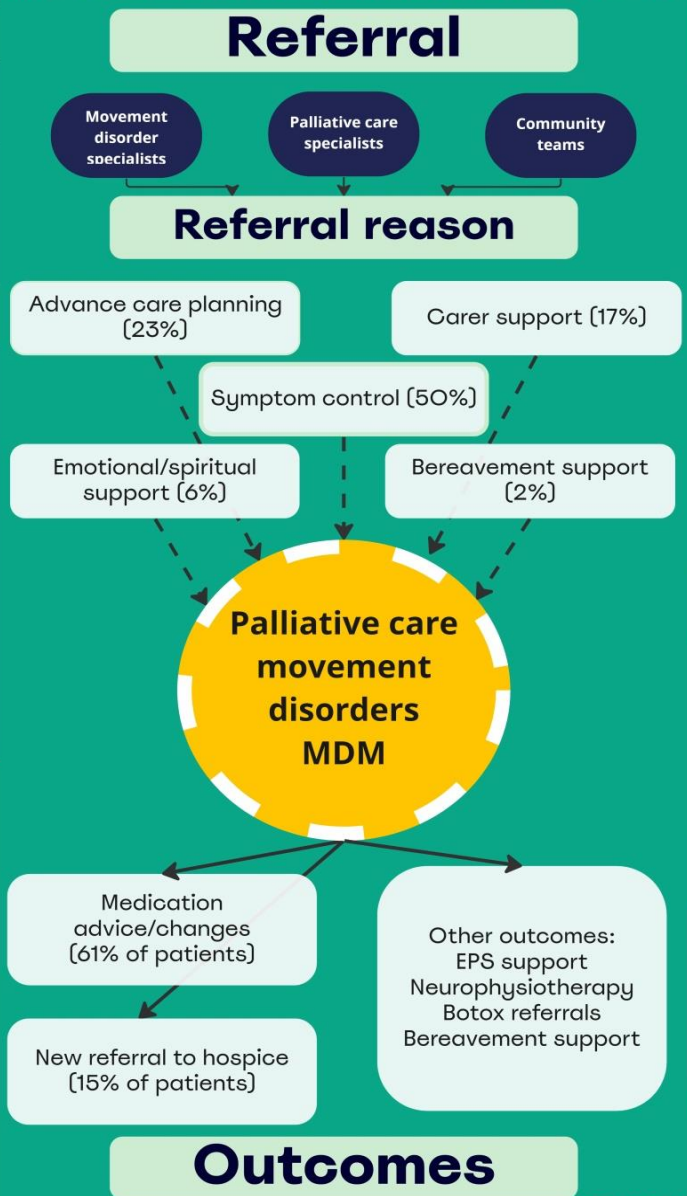
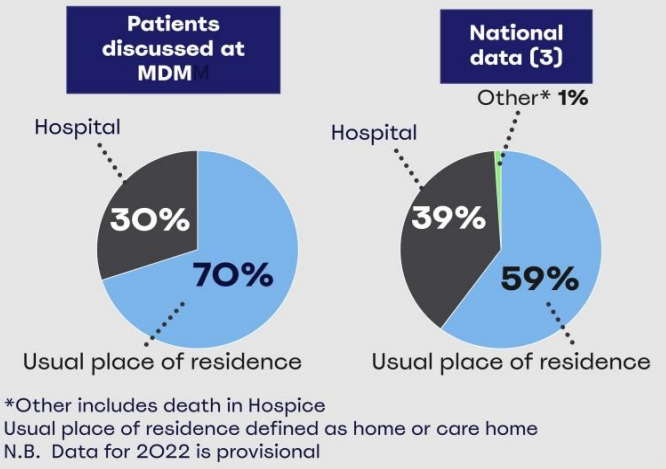


FIGURE [1]

PD patients place of death



Conclusion

- We have shown that an MDT embedded within an early integrated palliative care service for PD has strengthened partnership working
- Alongside active primary palliative care, specialist palliative care for PD can be sustainable and resource efficient in a UK setting

References

(1) Saleem T et al. Symptom prevalence, severity and palliative care needs assessment using the Palliative Outcome Scale: A cross-sectional study of patients with Parkinson's disease and related neurological conditions. *EAPC*. 2012;27:8

(2) Boersma I et al. Parkinson disease patients' perspectives on palliative care needs. *Neurol Clin Pract*. 2016;6(3)

(3) Data taken from Deaths with a mention of Parkinson's by place of death using mortality data from the Office for National Statistics (ONS) Data period: December 2019 to July 2022. Produced by Neurology and Dementia Intelligence Team: <https://www.gov.uk/guidance/neurology-data-and-analysis-a-guide-for-health-professionals>