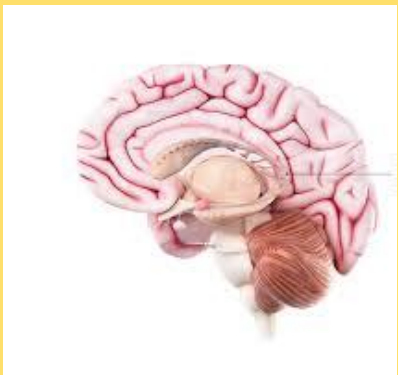


Improving bone health assessments in Parkinson's clinic

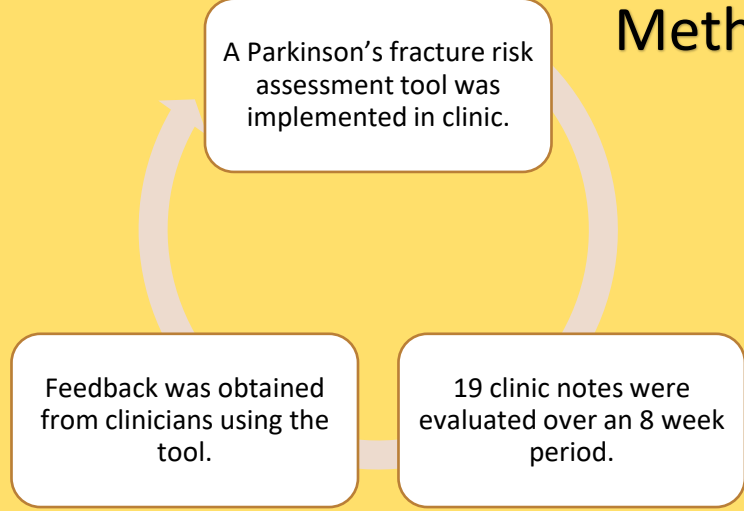
B Chisanga, R Walters, S Adhi, L Pugh
Healthcare of older person's department, King's Mill Hospital

Introduction

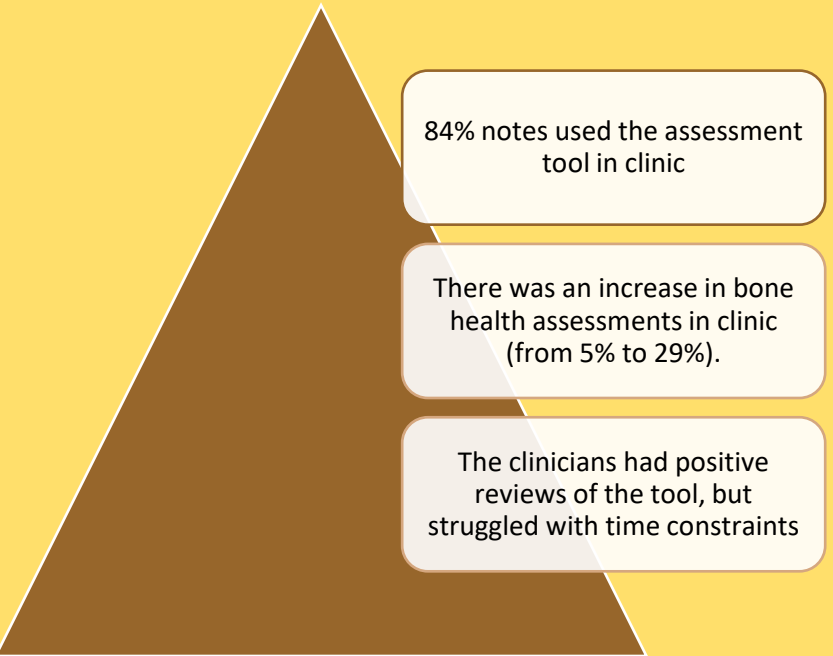
- People with Parkinson's disease are more likely to have osteoporosis and falls
- The outcomes of patients with Parkinson's disease and falls are worse than in the general population.
- Only 50% of patients with Parkinson's disease have a bone health assessment in clinic.



Methods



Results



Conclusions

- This project was successful in highlighting the problem of bone health assessments to clinicians.
- This project has led to the development of a new clinic that addresses bone health.
- The fracture risk assessment tool is used to identify high risk patients who should be referred to the new clinic.